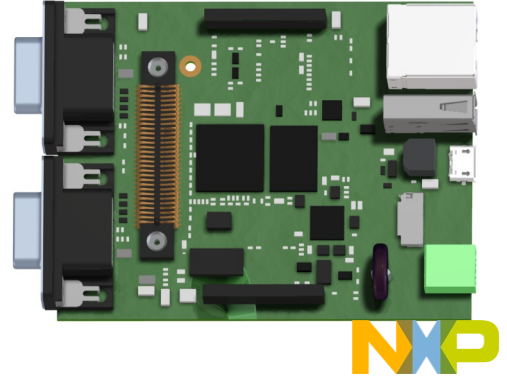


Thank you very much for purchasing SBC LYNX Embedded Single Board Computer!
 Now you are our partner and you can have access to DAVE Embedded Systems world!
 Please read carefully the following instructions to start evaluating immediately this brand new device.

SBC LYNX - KIT CONTENT

Before performing any operations check that the Single Board Computer box contains:



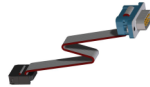
SBC LYNX: Embedded Single Board Computer SBC LYNX



MECHANICAL ASSEMBLY



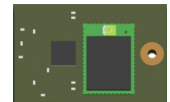
Universal Power Supply unit +12V with EU, UK and US adapters and Phoenix connector adapter



Serial cable adapter for connect to system console



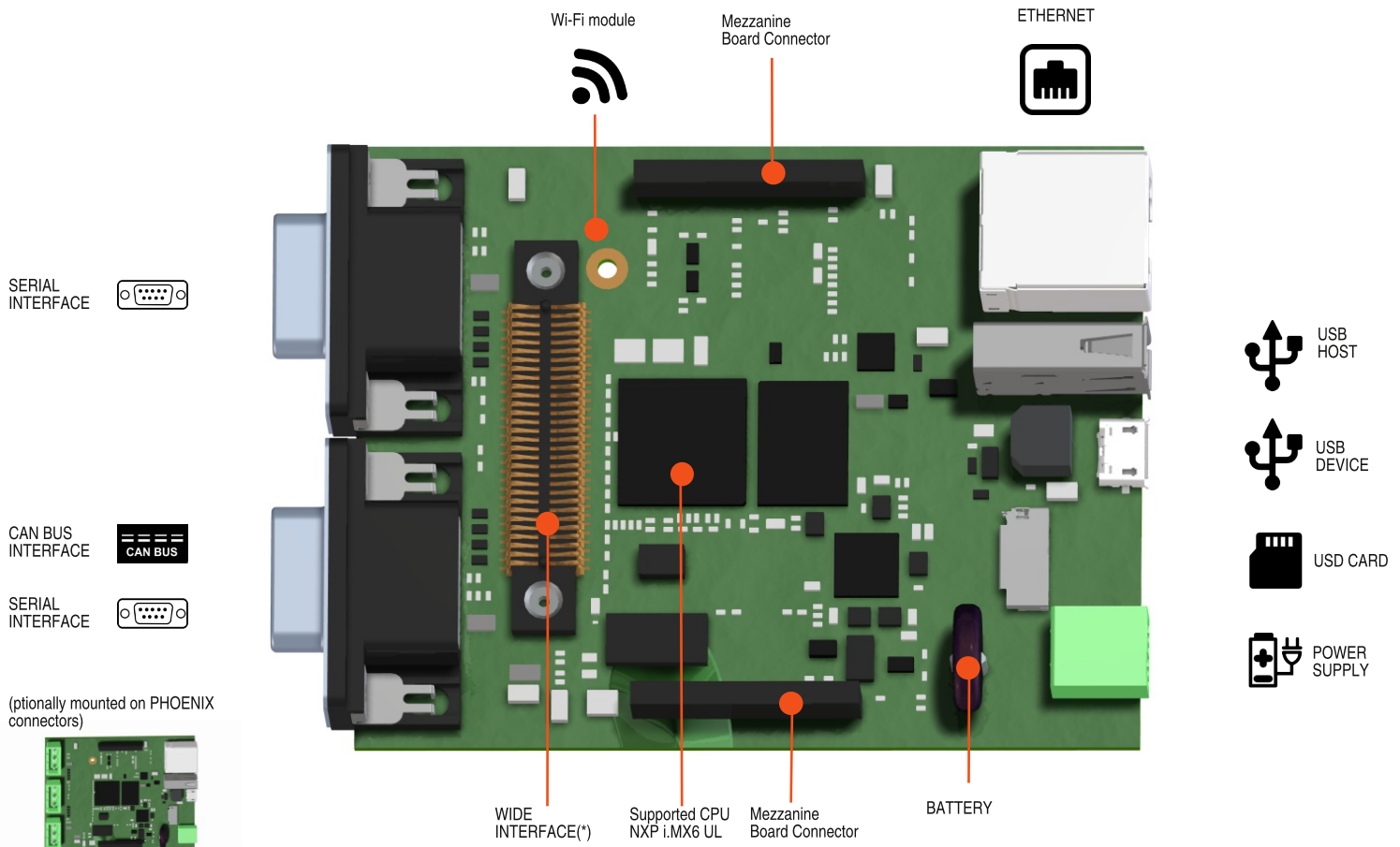
SD card with:
 - documentation
 - SW contents
 - Developers VM



Wi-Fi module (OPTIONAL)

PRELIMINARY

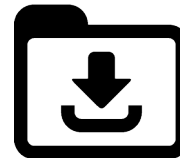
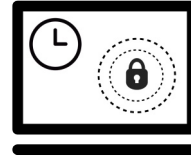
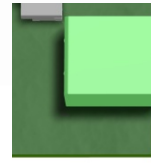
HARDWARE CONFIGURATION



(*) See SBC LYNX Manual for details

QUICK START GUIDE

- Take the Universal Power Supply unit from the box.
- Choose the proper plug adapter (EU, UK or US).
- Connect the power supply with the provided cable adapter to the dedicated connector on SBC LYNX showed on the image.
- Switch on the power.
- Wait until the system arrives at Home page - then enjoy!
- Enter the DAVE Embedded Systems' World registering your Kit.
Send an email to sales@dave.eu within the Kit Part Number and Serial Number.
Find the P/N and S/N on the label attached on the box.
- For start developing, please refer to the SBC LYNX Manual that you can find on provided SD card or on the DAVE Embedded Systems' RESERVED AREA.
- You are ready to use the SBC.
- Keep in mind that you can also download Android and other O.S. images for uSD card from the DAVE Embedded Systems' RESERVED AREA.
Refer to SBC LYNX Users' Guide for details.
- Remind that you can find documentation and development virtual machine on the provided SD card.



PRELIMINARY

COPYRIGHTS / TRADEMARKS

Ethernet® is a registered trademark of XEROX Corporation. All other products and trademarks mentioned in this manual are property of their respective owners. All rights reserved. Specifications may change any time without notification.

STANDARDS

DAVE Embedded Systems is certified to ISO 9001 standards.

DISCLAIMERS

DAVE Embedded Systems does not assume any responsibility for availability, supply and support related to all products mentioned in this manual that are not strictly part of the SBC LYNX.

SBC LYNX are not designed for use in life support appliances, devices, or systems where malfunctioning of these products can reasonably be expected to result in personal injury. DAVE Embedded Systems customers who are using or selling these products for use in such applications do so at their own risk and agree to fully indemnify DAVE Embedded Systems for any damage resulting from such improper use or sale. This appliance must only be installed by service personnel with suitable technical training and experience and who are aware of the dangers involved.

WARRANTY

SBC LYNX is guaranteed against defects in material and workmanship for the warranty period from the shipment date. During the warranty period, DAVE Embedded Systems will at its discretion decide to repair or replace defective products. Within the warranty period, the repair of products is free of charge provided that warranty conditions are observed. The warranty does not apply to defects resulting from improper or inadequate maintenance or handling by the customer, unauthorized modification or misuse, operation outside of the product's specifications or improper installation or maintenance. DAVE Embedded Systems will not be responsible for any defects or damages to other products not supplied by DAVE Embedded Systems that are caused by a faulty SBC LYNX.

TECHNICAL SUPPORT

We are committed to making our products easy to use and will help customers use our CPU modules in their systems. Technical support is delivered through email for registered kits owners. Support requests can be sent to support-axel@dave.eu. Software upgrades are available for download in the restricted download area of DAVE Embedded Systems web site: <http://www.dave.eu/reserved-area>. An account is required to access this area. Please refer to our Web site at <http://www.dave.eu/products/sbc/freescale/i.mx6-ul-lynx> for the latest product documents, utilities, drivers, Product Change Notices, Board Support Packages, Application Notes, mechanical drawings and additional tools and software.

© 2016 DAVE S.r.l.

All trademarks and registered trademarks are the property of their respective owners.

All features and specifications subject to change without notice.